

Gangs, Groups, Networks, and Deterrence: An Evaluation of Syracuse Truce

Robert E. Worden, Ph.D.^{1,2} Sarah J. Mclean, Ph.D.¹ Andrew P. Wheeler, Ph.D.¹ Kelly J. Becker, MA¹
¹The John F. Finn Institute for Public Safety, Inc. ²The University at Albany, SUNY

Project Abstract

Syracuse Truce is a focused deterrence intervention modeled on the group violence intervention of the National Network for Safe Communities, designed to reduce gun violence by members of street gangs and other criminal groups.

We examine gun violence in the city over time and estimate the impact of Syracuse Truce on gang-related shootings. Our final project will include impact estimates for individual gangs and other groups. We are particularly concerned with how the deterrent effects of Truce may be contingent on the direct and indirect reach of the deterrence message within gangs/groups, the intensity of enforcement applied to the gangs/groups, and on the cohesion of the social networks that gangs/groups respectively comprise.

Syracuse Truce

Group Violence Intervention

- Focuses **additional** sanctions on target offense type
- Focuses those sanctions on small number of offenders most responsible for those offenses
 - Strategically focuses the threat of criminal sanction
- Target offense for Truce: fatal and non-fatal shootings
- Target offenders: members of violent groups/gangs

Strategic Components

- Direct Communication with Gang Members
 - "Call-ins"
 - Law enforcement, service providers, community
 - Probation/parole home visits, street outreach, notification letters & custom notification letters
- The Messages
 - Groups will be held collectively responsible for shootings
 - All available enforcement tools will be used in addition to normal day-to-day enforcement
 - Services are available for those who want to make good choices
 - The violence is wrong and your community wants it to stop
- Enforcement actions
 - Saturation patrols in group territory, disruption of street drug markets, probation/parole home visits, warrant enforcement, housing and other code enforcement, traffic enforcement, child support payment enforcement, enhanced local/federal prosecution for "impact players"

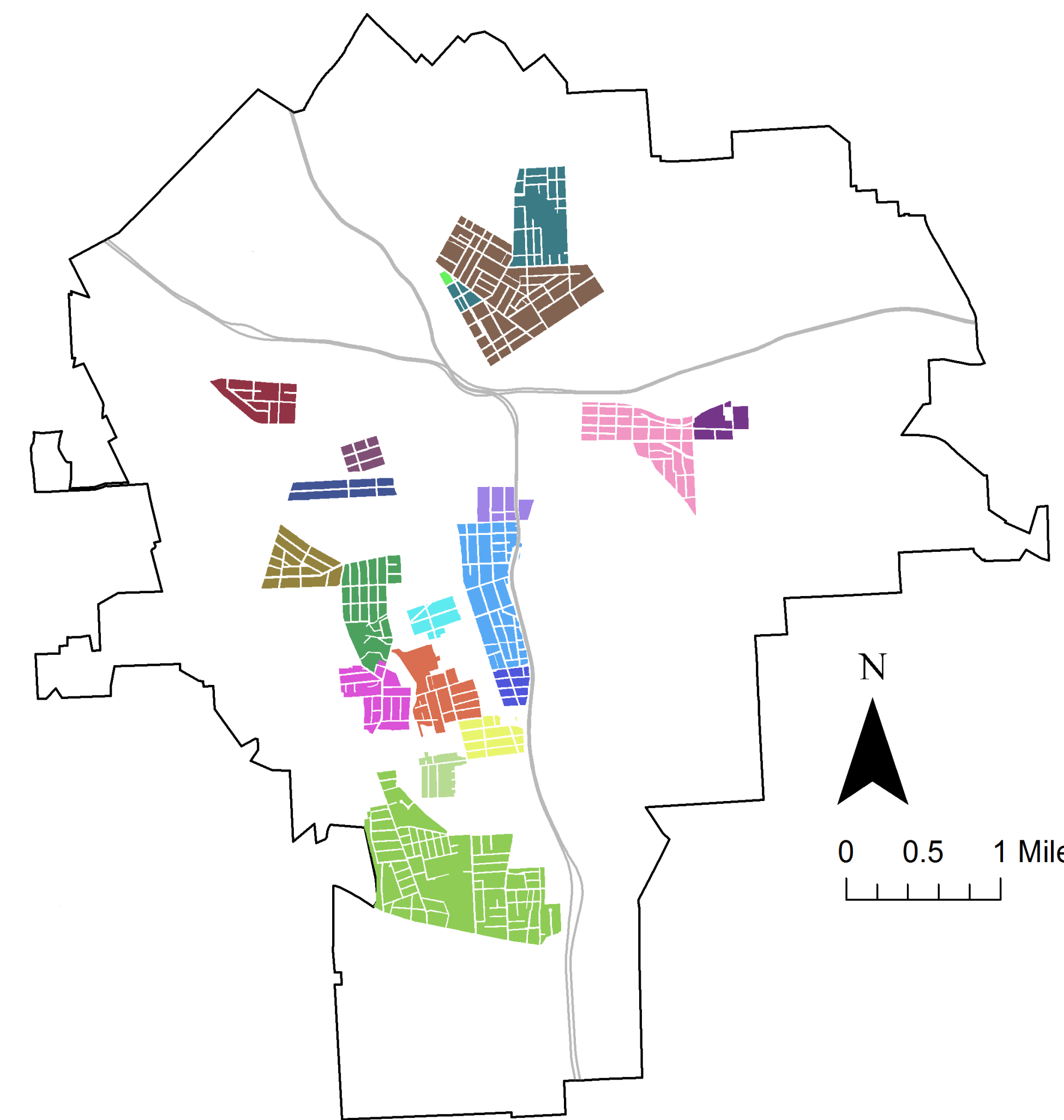
Problem Analysis

Syracuse Gun Violence 2009-2012

- Syracuse has a total population of approximately 145,000
- Homicides: 11-24 annually, 2002-2012
 - 2012: 11 gun homicides; rate of 7.6 per 100,000 population
 - Greater than average for cities its size; less than that of large cities (250,000+)
- Violent crime generally: 940.2 per 100,000 (2012)
 - 90% higher than average for cities its size
 - 33% higher than average for largest cities
- Shootings with injuries/fatalities: 80-88 incidents annually, 2009-2012
 - Two-thirds to three-quarters were gang-related
- Law enforcement intelligence identified 24 active gangs with a total of approximately 1,750 members citywide
- Truce enforcement actions have been focused on the initial identified gangs. Due to incomplete intelligence, no new gangs have been targeted.

Problem Analysis: Continued

Map Of Gang Territories as of January 2014



Reach of Notifications

Gang Representation at Truce Notifications

- The purpose of a Truce notification ("call-in") is to select a subset of members within each identified gang to act as messengers to bring the deterrence message back to other members of their gang.
- 2015- gang representation among notification attendees decreased:
 - location change from courtrooms to churches introduced gang territory concerns
 - nature of gun violence driven by feuds between only a few gangs

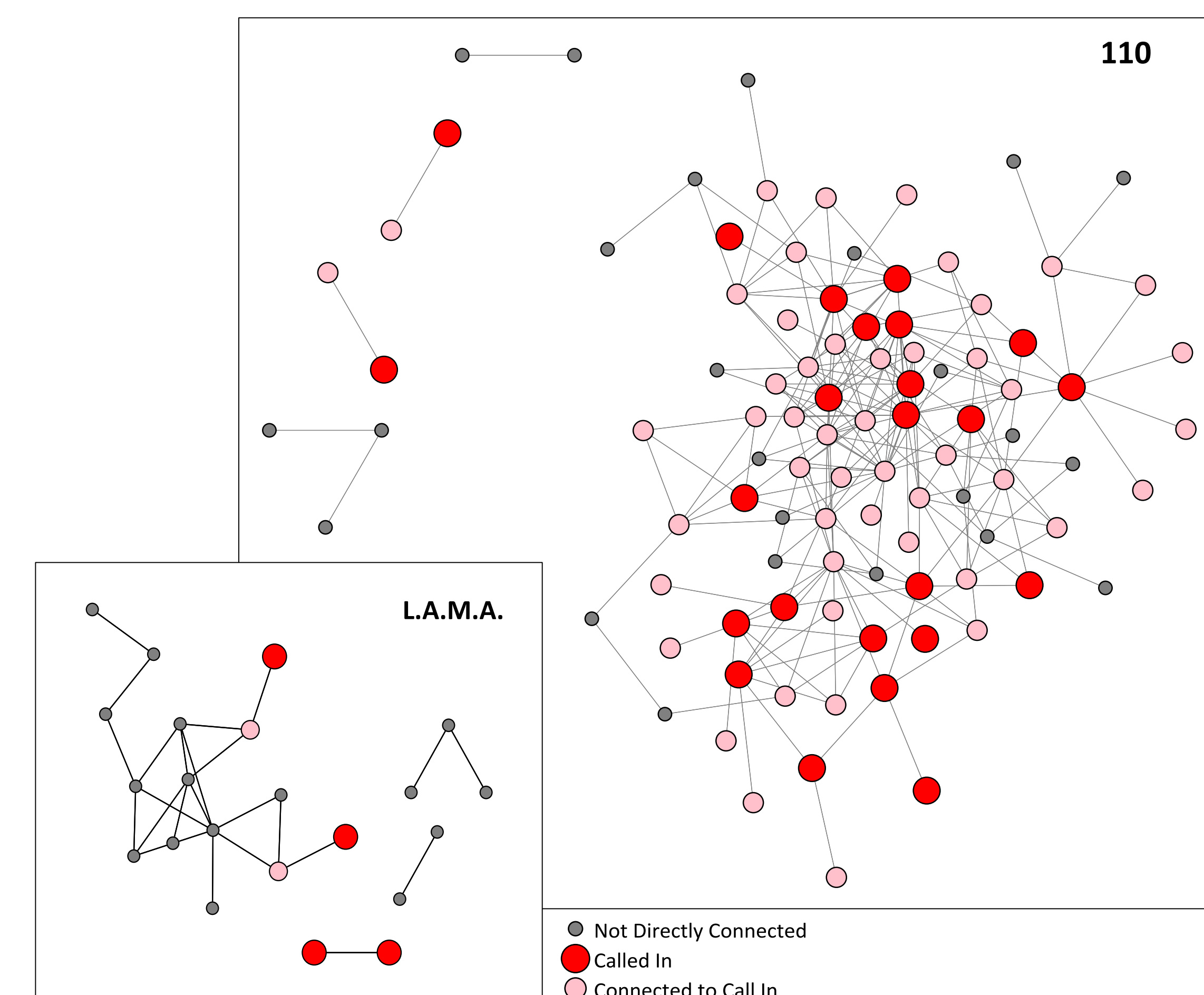
Gang Representation by Notification Session Date

Gang	Feb/Mar 2013	May/June 2013	Nov-13	May-14	Nov-14	Mar-15	Jun-15	Nov-15
110	5.3%	13.2%	5.4%	3.8%	3.8%	1.6%	3.6%	3.0%
1500	1.1%	8.4%	4.3%	5.9%	5.0%	1.0%	5.9%	3.0%
Blood	4.4%	1.8%	1.7%	6.8%	-	100.0%	-	-
Bootcamp	5.8%	11.7%	2.7%	6.8%	8.2%	12.2%	4.7%	3.5%
Bricktown	3.2%	6.9%	4.1%	1.5%	3.0%	3.4%	4.2%	5.6%
Brighton Brigade	8.6%	4.3%	5.4%	4.6%	4.6%	5.8%	-	-
Cash Money Project	3.4%	-	7.4%	12.0%	-	4.0%	-	-
Crip	-	-	-	-	25.0%	-	-	-
Elk Block	9.5%	33.3%	-	-	-	-	-	-
Furman Fast Cash	5.9%	5.9%	-	3.0%	3.0%	-	-	-
Gracetown/Khalah 190	2.7%	-	-	25.0%	-	-	-	-
Highland	1.7%	8.5%	1.9%	8.0%	2.0%	-	-	-
Hulk Music	-	-	-	-	5.6%	-	-	-
L-Block	22.2%	11.1%	22.2%	10.0%	-	-	-	-
L.A.M.A.	6.0%	9.5%	0.8%	4.3%	-	5.3%	-	-
Latin Kings	3.7%	1.9%	-	7.3%	4.9%	2.4%	-	-
Lick City	-	14.3%	-	8.0%	-	4.0%	-	-
O-Block	-	14.3%	-	20.0%	-	-	-	-
OBG	-	-	-	-	-	100.0%	-	-
Pioneer Homes	42.9%	14.3%	9.1%	4.2%	4.2%	4.2%	-	-
Richmond Ave	10.0%	20.0%	10.5%	-	5.6%	11.1%	-	-
Uptown	10.4%	10.4%	4.1%	1.0%	4.1%	5.1%	-	-
V-not	3.4%	-	-	-	-	3.7%	-	-

Reach of Notifications: Continued

Assessing Notification "Reach": Network Analysis

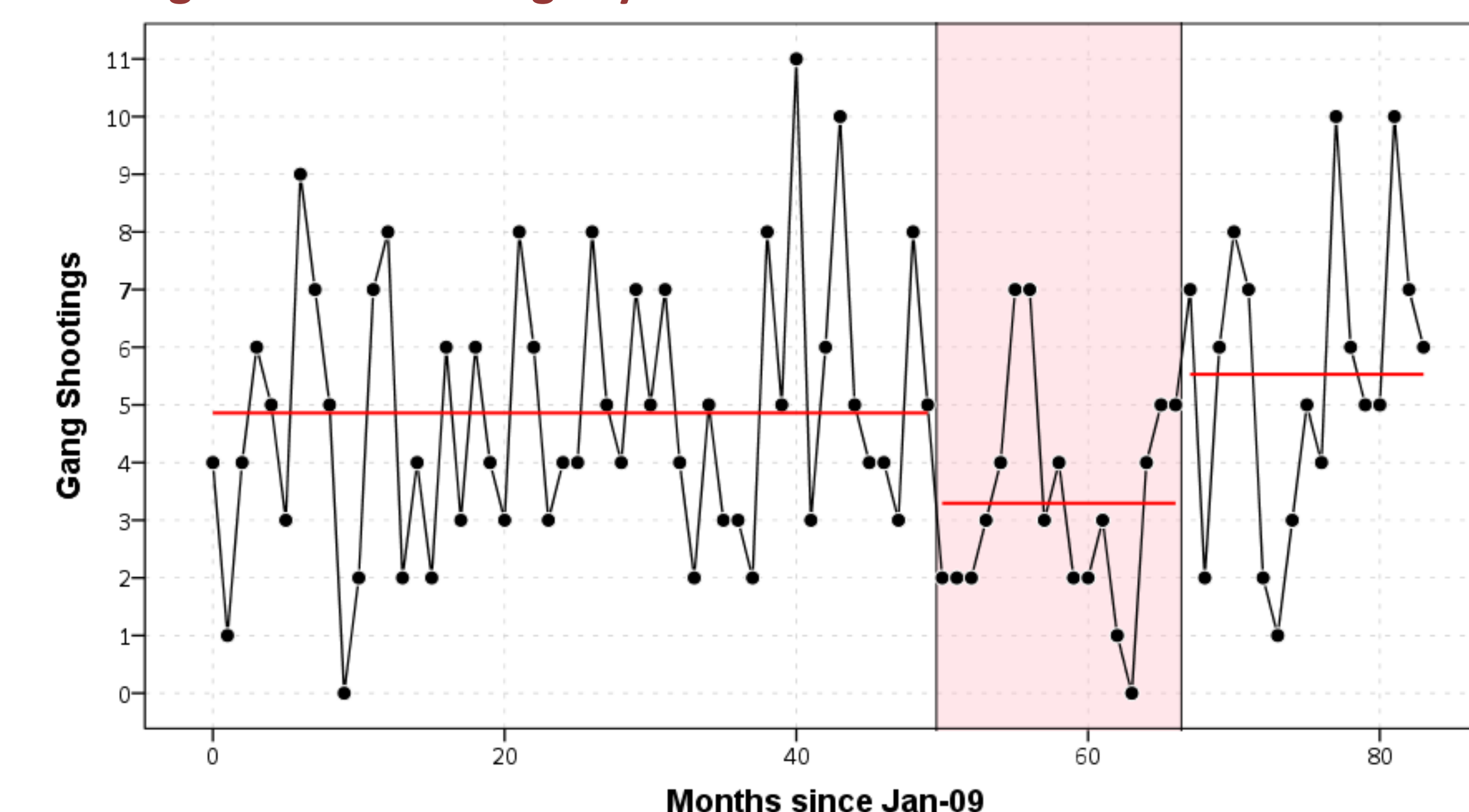
Network analysis was performed on two Syracuse gangs to assess the overall "reach" of the Truce message based on those members who attended a notification in 2013 and their connections to other members within that gang. Edges were based on co-arrests or being field/traffic stopped during the same incident.



- L.A.M.A.
 - Gang totals: 84 total members, 14 call-in attendees, overall reach 19%
 - Non-isolate member totals: 22 members, 4 call-in attendees, overall reach 27%
 - 110
 - Gang totals: 182 total members, 34 call-in attendees, overall reach 46%
 - Non-isolate member totals: 97 members, 24 call-in attendees, overall reach 75%
- Variation in reach of the Truce message across members of a gang turns on
- representation of the gang at notifications
 - density of those members' social connections to other gang members

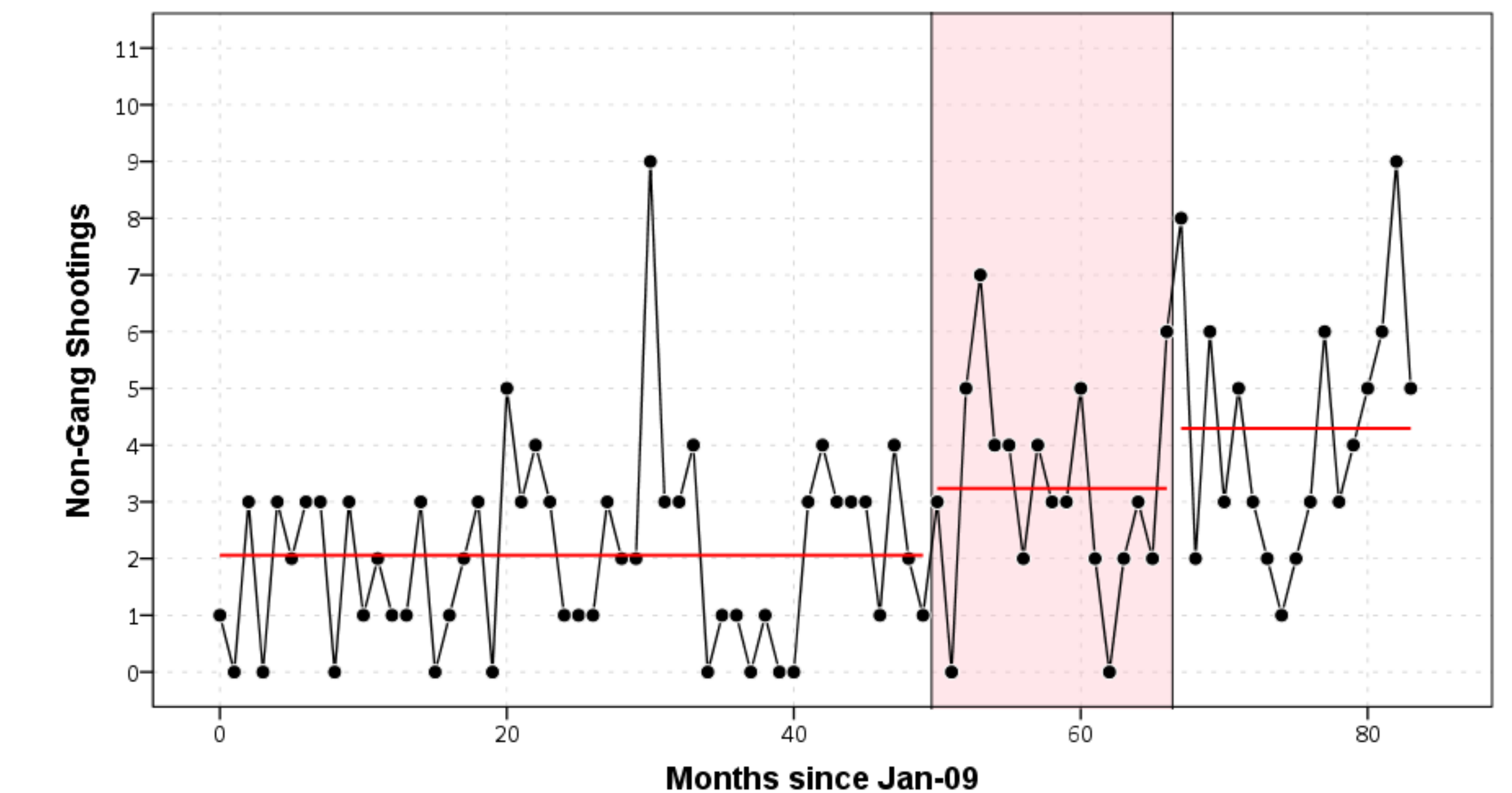
Syracuse Truce: Evaluation of Shootings

Gang-related Shootings by Post-Intervention Period

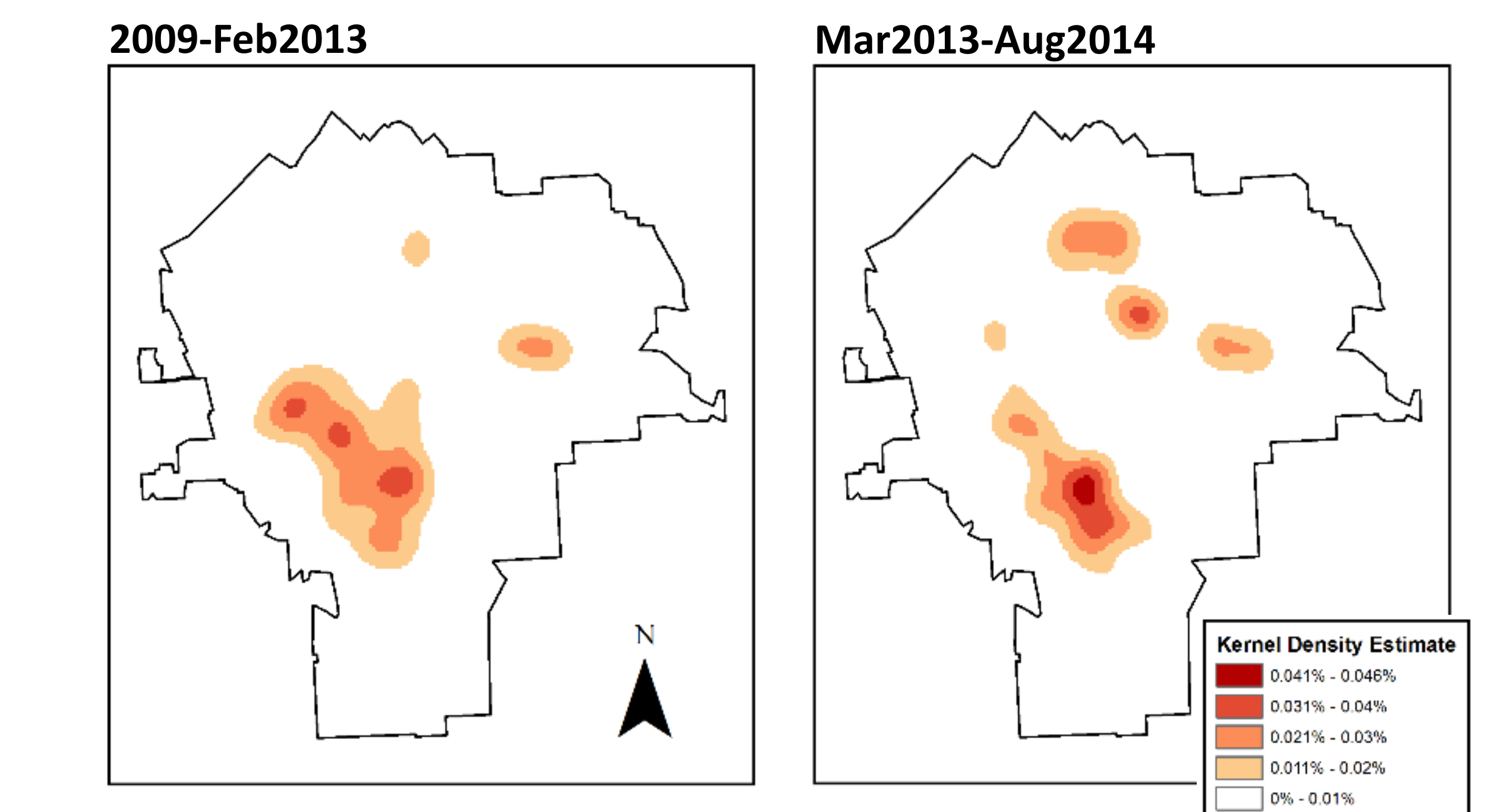


Syracuse Truce: Impacts

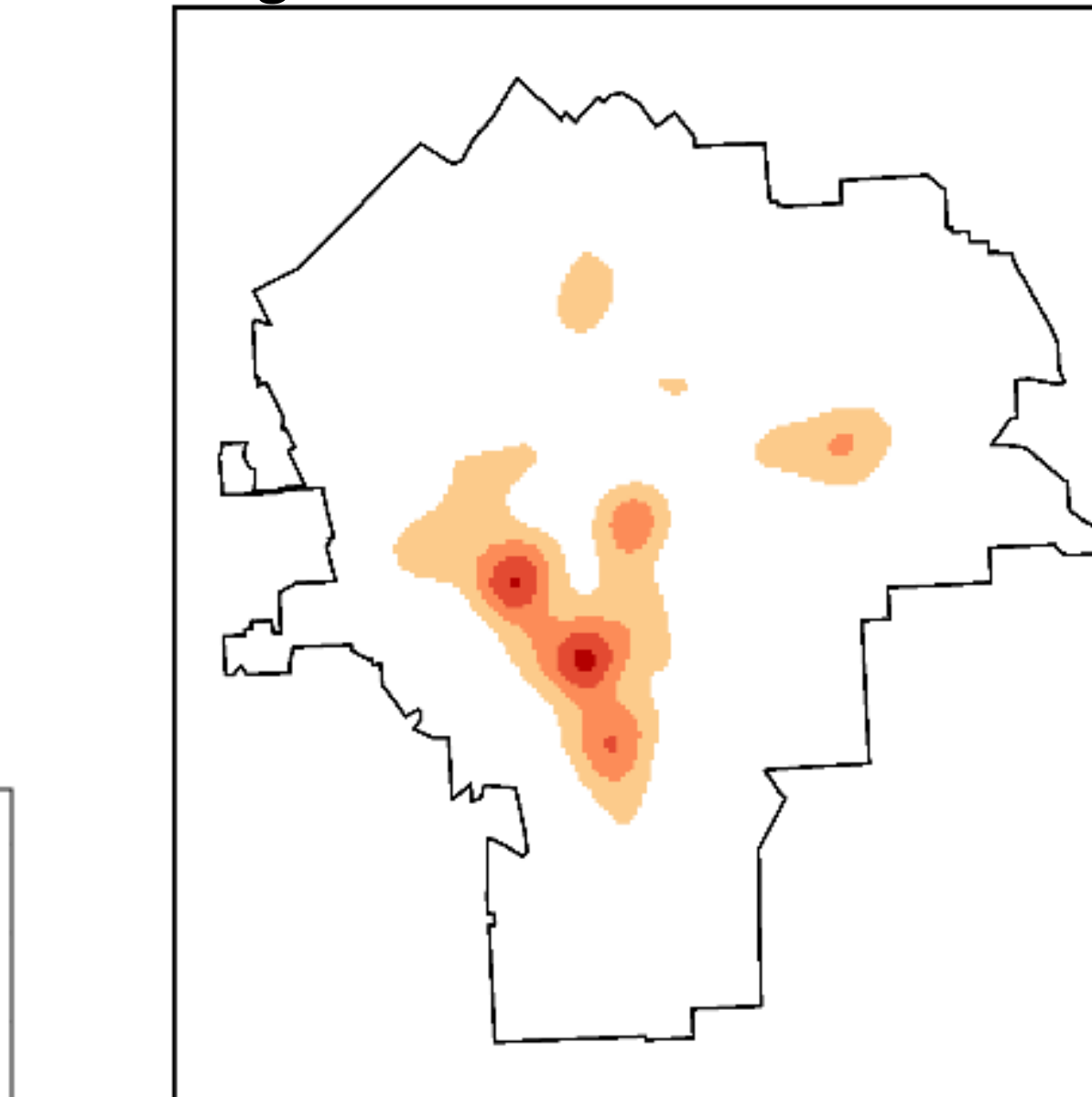
Non-Gang Shootings by Post-Intervention Period



Maps Pre/Post Truce Shootings



Aug2014-2005



Kernel Densities are probabilities (so each set the raster is normalized to sum to one. The total number of shootings for each period is: 354 in pre period, 72 in the first post period, and 111 in the second post period. KDE calculated using *GrinGis* IV. Bandwidth is fixed at 300 meters using a normal kernel. Grid cell sizes are 50 meters square.

ARIMA Results on Intervention Impacts

	B	SE	P-Value
Gang Shootings			
Post 1	-1.70	0.87	0.05
Post 2	0.54	0.59	0.36
Non-Gang Shootings			
Post 1	1.17	0.54	0.03
Post 2	2.03	0.43	<0.01

Conclusions

- Gun violence is increasing in Syracuse
 - Spike in summer of 2014
- Dynamics of gun violence is changing
 - Proportionately less gang-involved
- Truce reduced gang violence relative to the control series of non-gang shootings
 - 47% in the first post period (months 1-17)
 - 21% in the second post period (months 18-17)